

OROFIT₂
BESPOKE

THE REGAL REPERTOIRE
COME REVEL IN OUR
SARTORIAL COLLECTION









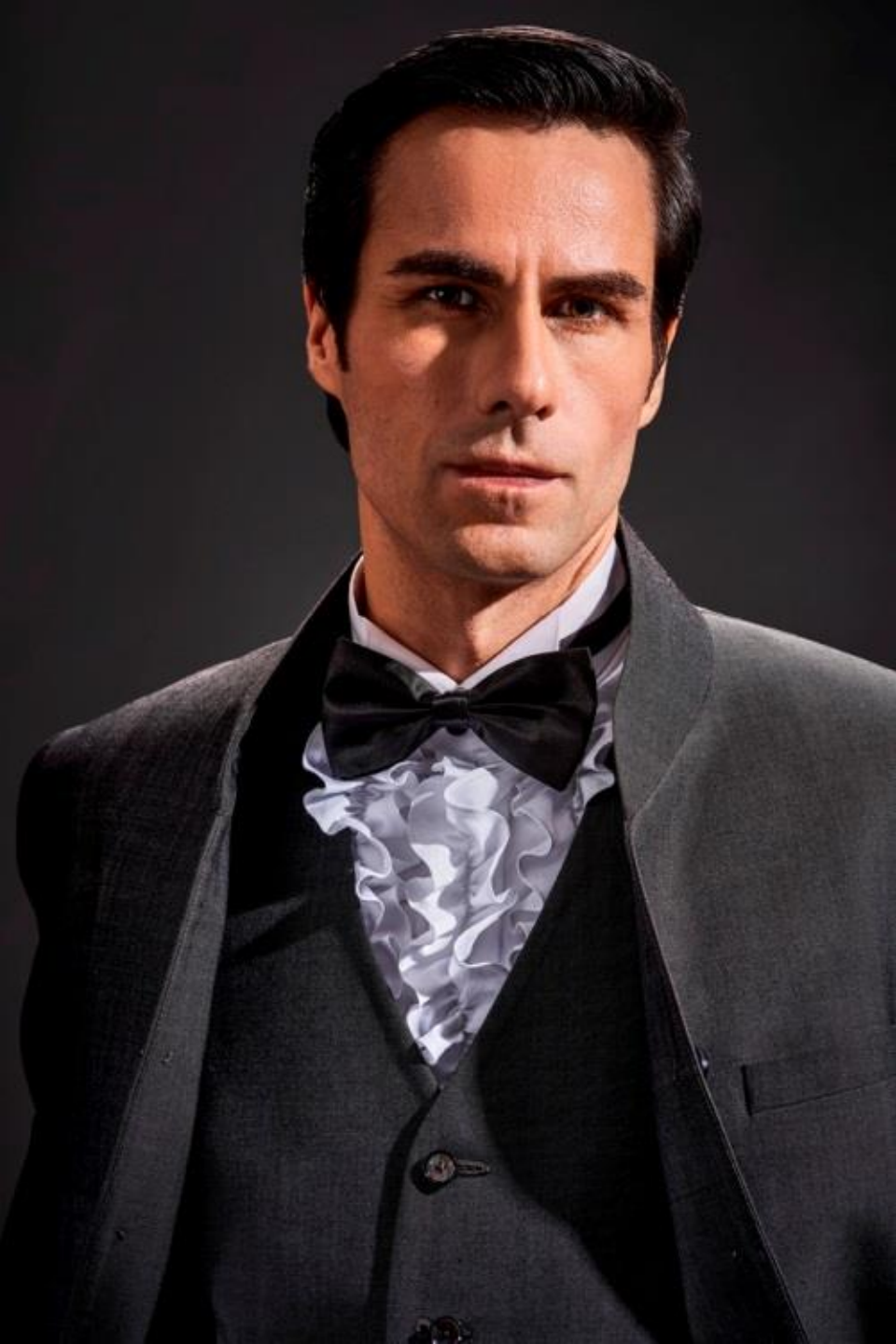
A contemporary classic - elegance in clean lines, artistic expressions, contemporary silhouettes and decadent fabrics all tailored to perfection.

The ensemble: True Blue - a single breasted, one button peak lapel suit worn over a V-neck five-button waistcoat and a tuxedo jacket with satin lapel details. Paired with slim-fit trousers with an Italian Giza cotton shirt with half-cutaway collar and French cuff









Legacy of style – Leave behind your mark of style. An insanely magnificent collection of all things sartorial , maximalist and heart stopping.

The ensemble: Effortlessly noble- a single breasted three button linen jacket with a broad collar lapel and two button patch pocket beige jacket. Paired with draw string trousers and spread collar shirt.













A royal renaissance –
the essence of our new
Spring summer collection
is the royal heritage that
speak of rich and
glorious tradition.
Experience the greatness
and make it your own.

The ensemble: Princely
Charm – a six button
folk red, self-jacquard
velvet cross bandgala
and an imperial brown
velvet bandgala with
exquisite turtle neck
collar. Paired with royal
woolen trousers and a
mandarin collar shirt.











Ambassadors of sartorial - these are men who aren't just in tune with the menswear pulse. They are dictating history without being tainted by fads.

The ensemble: Blue Jazz – a six button sleeveless jacket cut from regal blue self-jacquard linen silk with metal button details and mandarin collar brocade design. Paired with slim fit trousers and an Italian Giza cotton kurta shirt.









